



Student Handbook 2025



WEYMOUTH ENGLISH CENTRE

WELCOME

Hello and welcome to Weymouth English Centre. We are sure you will have a very happy time with us in England. My name is Peter, and I am here to help you with everything you need for your course. This booklet has important information that you need to know about your stay. If you have any questions or need more information, please contact me by email at info@weymouthenglishcentre.com or by telephone on +44 (0) 1202 800596



The WEC team is looking forward to meeting you!

Table of Contents

TABLE OF CONTENTS	- 1 -
BEFORE YOU ARRIVE	- 2 -
ARRIVAL	- 5 -
ACCOMMODATION	- 6 -
CULTURE	- 8 -
WEYMOUTH	- 9 -
YOUR FIRST DAY	- 10 -
FREETIME PROGRAMME	- 11 -
OUR COURSES	- 12 -
IN THE CLASSROOM	- 13 -
WELFARE	- 14 -
MEDICAL	- 15 -
ONLINE SAFETY AND CYBER-BULLYING	- 16 -
BEACH SAFETY	- 17 -
LOCAL INFO	- 17 -
RULES & REGULATIONS	- 18 -
TIME TO GO HOME	- 19 -



BEFORE YOU ARRIVE

Essentials to pack:

- Ticket (flight/train)
- Passport

You cannot use a national identity card from an EU country, Switzerland, Norway, Iceland or Liechtenstein to enter the UK. You must have a passport. It is a good idea to make a copy or a photo of the main page of your passport in case you lose your passport while in England.

- Electronic Travel Authorisation (ETA)

You will also need to obtain an Electronic Travel Authorisation (ETA) to come to the UK if you do not have a visa. If you are from a non-European country, you can apply for one from 27th November 2024 and if you are a European citizen, you can apply from 5th March 2025. An ETA is quick to apply for and receive, and costs £10. It allows multiple journeys to the UK of up to six months at a time over two years. You can apply using this link:

<https://www.gov.uk/guidance/apply-for-an-electronic-travel-authorisation-eta>

Scroll down on this application page until you see the green buttons - you click on one of these for the app, or click on the blue link below entitled 'apply online' to apply on the website page:

Apply for an ETA

The fastest way to apply is using the UK ETA app.

[Download on the App Store >](#)

[Download on Google Play >](#)

Help with the app

You can read the guide on [using the UK ETA app.](#)

If you cannot use the app

You can [apply online.](#)

Please remember to take your ETA with you on paper or digitally when you go to the airport together with your passport.

- Visa (if required)



Students who have a passport from an EU country, Switzerland, Iceland, Lichtenstein or Norway should not need a visa. If you are not from one of these countries, please check the requirements with your nearest British Consulate or look online: www.ukba.homeoffice.gov.uk

- Health and travel insurance documents

All students are expected to have medical insurance. You can arrange your own insurance, or you can add it to your booking with us. We offer International Student Travel Insurance that contains multiple sections of cover including cancellation or curtailment, emergency medical and other related expenses, course fees protection, baggage, personal accident, and overseas legal expenses.

- electrical plug adaptor
- sun cream
- mobile phone
- toiletries (shampoo; shower gel; toothbrush; toothpaste)
- £50 to £100 pocket money per week (bus pass could be approximately £15 per week)

Everyday items:

- waterproof jacket
- walking shoes
- swimwear
- large beach towel
- sports clothes (for indoors and outdoors)
- sports shoes (with non-black soles for sports hall activities due to the black scuff marks they create on floor)
- beach shoes (for those doing windsurfing, sailing or outdoor adventure)
- sunglasses
- any medicines you need
- pens, pencils, rubber



Accommodation details

We will email you the details of your homestay before you come to Weymouth. This includes the address and some information about the people living in the house, for example, if they



have children, or pets, and what their hobbies are. It is nice if you send them a short email or letter to introduce yourself - you can tell them your name, how old you are, how long you have been learning English for etc. It is also a good idea if you have a photo that you can send them. WEC hosts are very welcoming so feel free to tell them about anything that you need or if there is something that worries you.

Map

Together with your host details, you will receive a Google map from us that shows where the school is, the main meeting points, where you find a doctor and the coach pick-up points for the Saturday excursion. It is a good idea to add this to your map on your phone and also your host's address so you can easily find your way around Weymouth.

Bus pass

If your homestay is not within walking distance to the school (most homestays require a short bus ride), weekly bus passes are available on the bus from the driver, or you can buy them in the app (<https://www.firstbus.co.uk/first-bus-app>) before you arrive in Weymouth. Once you have downloaded the app and logged in, choose the Dorset area and Weekly tickets. Students hosted in Weymouth buy Weekly-Child-Weymouth and those hosted in Portland need Weekly-Child-Dorset. Passes can also be purchased on the parents' phone as well and shared with the child via a link.

Activity planning

A few weeks before your course begins, we will send you login details to our online activity programme planner. In many cases, there are several activities running at the same time, and you can choose the programme you are happiest to do. WEC activities can be sports, cultural, creative, or various games so there is always something for everyone. You will then be able to plan your activity programme using a laptop, tablet or smartphone from home before you arrive. Those on the English & Sailing, English & Windsurfing and English & Outdoor Adventure courses, have a little less planning to do as four afternoons, they will be doing their choice of sport.

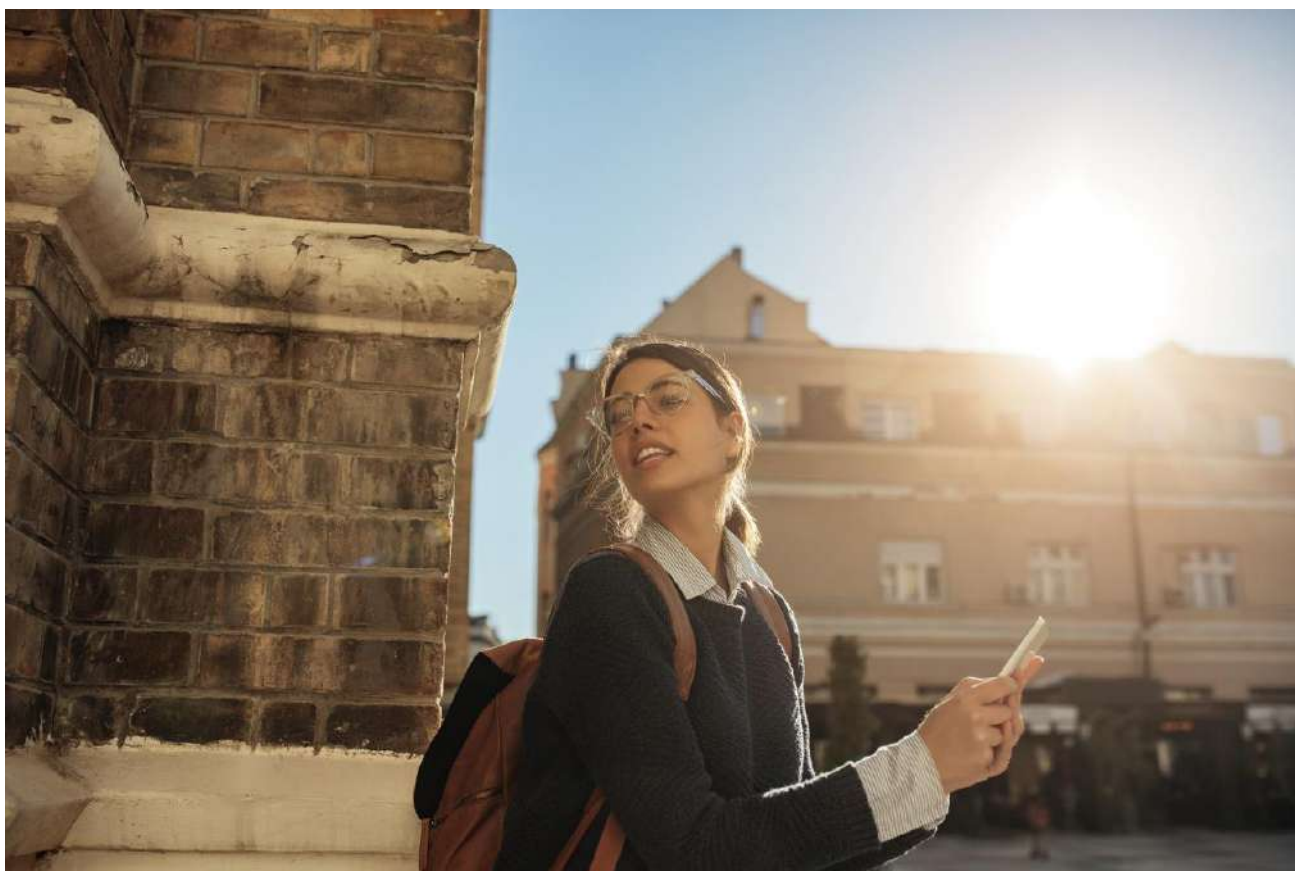
Using your mobile phone in the UK

If you come from outside of the EU, you will most probably need a UK sim that we are happy to give you if you need one.

If you come from the EU, there are no volume restrictions on your voice calls and text messages (SMS) when you're roaming in the UK. Any calls or texts not included in your contract will be charged at the same rate you'd pay in your home country. However, there are rules and



limits on how much data you can have charged at your domestic price. These limits depend on the type of contract you have. Please check details of the 'so-called' fair use policy with your mobile provider before travelling.



ARRIVAL

Arrival at the airport

When you arrive in London, you should go through Passport Control and then follow the "Baggage Reclaim" signs to collect your luggage. If you have booked a place on one of our transfer coaches from Heathrow, one of our leaders will be waiting in the arrivals hall for you as you come through the doors. He / she will be wearing a blue shirt with our WEC logo on it and will be holding a poster with "Weymouth English Centre" and the school logo on it (see photo at the bottom of the page). WEC coach transfer is available for students travelling on flights arriving at Heathrow on Sundays between 09.00 and 17.00. There will be students arriving from many different places so there may be a short wait until everyone has arrived.

You will travel to Weymouth College on the coach and your hosts will be waiting for you when you arrive. The journey from Heathrow to Weymouth takes approximately 2.5-3 hours. The coach will drop you off at Weymouth College where your hosts will be waiting for you and will take you to your homestay.



If you have booked a taxi transfer, the taxi driver will be waiting in the arrivals hall for you as you come through the doors. He / she will be holding a poster with "Weymouth English Centre" and the school logo on it. The driver will then take you directly to your homestay.

If your parents are taking you to Weymouth, please tell us how you are travelling and what time you expect to arrive in Weymouth. You should arrive at your homestay between 16:00 and 21:00 on the Sunday and depart by 10:00 on the Saturday at the end of your course.

Airport security

Our leaders wear blue shirts with the WEC logo and will have a Weymouth English School poster with the WEC logo on it. The leader with the WEC poster will show you a list with your name on it. If the leader does not show you your name on a list, please call our emergency telephone number and we will help you find the right leader. Taxi drivers do not have WEC shirts, but they will always have a WEC poster and your name.



ACCOMMODATION

Meeting your homestay

Your hosts will be waiting for you when your coach arrives at Weymouth College (unless you are travelling by taxi, in which case the taxi driver will take you directly to your homestay). They will then take you to your new "home" and you can spend the rest of the day getting to know them and other students in the house. School begins the next day.

Staying with your homestay



Staying in a homestay is the best way to experience "the English way of life". This gives you the chance to speak and listen to English, as well as find out about life in the country. You should join in with their family life as much as possible and help out with some of the day-to-day things such as washing up, laying the table. This also gives them time to talk to you. They will treat you as a member of the family, which also means that they will not allow you to do things that they do not let their own children do.



Some homestays give their students a key and others don't. If your homestay does give you a key, please don't keep it with your ID card or with anything else that has their address. Your clothes will be washed for you, normally once a week and you will be given a bath towel (not a beach towel) and all your bed linen. Most homestays have Wi-Fi and are happy for students to use this. For your safety, you must be home by 22:00.

Life in England

Life in England is probably different to life in your own country. You will be living with hosts you have probably never met before, you will have a room that is different to yours at home and the whole way of life with your hosts will be new to you. Houses in England can be strange to you, some students are surprised to find whole roads of houses which all look the same or how small some of the houses are. If you can accept that all these things will be different, you will be ready for an important and valuable experience in your own life.

Host family houses in England often only have one bathroom which everybody shares so it is a good idea to ask your homestay about the best time to have a bath or shower. English families normally eat their main meal in the evening, usually at around 18:00. English food is different to food in your own country but keep an open mind and be ready to try everything. Tell your homestay the things you like to eat and the things you don't like.

Homestay changes

Sometimes, for various reasons, a homestay will have to cancel. It doesn't happen very often, but if it does, you will be offered another homestay and details will be sent to you before you travel.



CULTURE

England and the English

There are things characteristic to England. There is a King, people drive on the left, children have to wear school uniform. Even our time is different to the rest of Europe (except Portugal): we are one or two hours behind, depending on the country. English houses are sometimes less spacious than in other countries and English people are well-known for their love of pets, so it is common to have pets: dogs, cats, birds, hamsters etc.

The English are usually very friendly, polite and helpful. You will hear "Please", "Thank you", "Excuse me" and "I'm sorry" a lot and maybe a lot more than in your country. It is important that you try to remember to say "Please" and "Thank you" if you ask the way, for example, or want to know how much something costs, or want some more food in your homestay. The English don't mind when you make mistakes so don't worry when speaking to them.



English people, on the whole, have a very good sense of humour and are more than happy to laugh about themselves. They like to play with words and if your level of English is good, you will notice this and perhaps even be able to join in. English food is not as bad as everyone thinks it is. Normally, breakfast in England is toast and cereal, there is a light meal at lunchtime and then a hot meal normally at around 18:00. We are pleasantly surprised to see a lot of the feedback from our students being happy with the food in England ☺.

We drink a lot of tea with milk, not only after meals but throughout the day. Queuing is a very famous and important English custom. It is where everybody forms a line and waits patiently until it is their turn. This is important when waiting for the bus or to buy a drink in the canteen. It might seem very strange at first, but you should never try to push or jump in front of people queuing.



WEYMOUTH

Weymouth is a great place for your English course. It is on the south-west coast, about 170km from London and has a population of about 65,000 people. It is one of the most popular seaside resorts in the area and many English people come here for their holidays. There is a long, sandy beach and several other beaches. There is a busy old harbour, where you can see fishing boats coming in with the fish they have caught. There are lots of shops, big and small. There are street cafés and ice cream shops as well as fast food restaurants.



The town is on the Jurassic Coast, a 95 mile stretch of coastline awarded World Heritage Status by UNESCO, with exposed cliffs which let us look back 185 million years. This coastline is famous for fossils and fossil hunting is one of the many activities which we offer during the summer. Some students stay with hosts on the Isle of Portland. This is also where our Sailing, Windsurfing and Outdoor Adventure courses take place.

Portland is famous for its Portland stone, which was used to build St. Paul's Cathedral and many other famous buildings. You can still see quarries where the stone comes from. There is a lighthouse at the very end of Portland. This is part of our Portland Tour trip, where we also visit pirates' graves and an old smugglers' cove. Chesil Beach is also a famous place in the area. It is a unique beach, 18 miles (29 kilometres) long, which is made up of 180 billion stones. You can get a good view of this on our Portland Tour, and it is also the end point of our cycling tour.

Many of the free time activities in the afternoons and evenings take place in various parts of the town that is a great way to get to know Weymouth. Such activities can include a visit to the SEALIFE Centre or to the Nothe Fort, an afternoon cream tea in a local café, a town walk, and various sports and games on the beach. There are lots to do and see in the area, and some of our other afternoon trips include Portland, Dorchester, the main town of Dorset, Durdle Door and Lulworth Cove, and the seaside town of Bournemouth.



YOUR FIRST DAY

Travelling to School

Most homestays take their students to school on the first morning but those who can't take you will ensure you know how to get there by showing you the way the evening before. Usually, there are 2 to 4 students staying in the same house who go to school and activities together. You do not need to carry an ID card or passport with you in England so please leave this with your homestay and lock them with any valuables in your suitcase. On your first day at school, you will be given a WEC ID card - please make sure you carry this with you at all times.

Arrival at School

The address of the school is: Weymouth College, Cranford Avenue, Weymouth DT4 7LQ. You should arrive at 08.45 on your first day of school. Our leaders will be waiting for you outside the main entrance to the college (see photo) at 8.50. They will be wearing blue WEC shirts so you can't miss them. They will wait until all the students arrive and then take you to the classrooms. Please do not go with anyone else. Even if you have been to WEC before and you know the way to the classrooms, you must wait at the entrance.

You will first do a written and spoken test of your English. You will get your ID card and be given some important information about your stay in Weymouth. Later in the morning, you will have your first lesson which will include tips and information about cultural differences and how to get the most out of your stay with us. We encourage everyone to complete your activity planning before you come to Weymouth but if you haven't, you will also have to finish that.

After lunch at the college canteen, we will take you on a short tour of Weymouth and show you the main meeting places and your bus stop to get home. Then you will go back to your homestay for your evening meal, and you will then meet our leaders again later for the evening activity.



Your typical day

Lesson one	09:00-10:00
Break	10:00-10:15
Lesson two	10:15-11:15
Break	11:15-11:30
Lesson three	11:30-12:30
Lunch at the college canteen	12:30-14:00
Afternoon activities	14:00-16:00
Afternoon sailing/windsurfing/outdoor adventure	13.00-16.00
Half-day trip on Wednesday	13.00-18.30
At home/dinner with your hosts	16:30-19:00
Evening activities	19:15-21:15
Bedtime	22:00

FREETIME PROGRAMME

Activities

There are activities for about two hours between 2 and 4pm in the afternoon and from 7.15 to 9.15pm on Monday, Tuesday, Thursday and Friday. On Wednesday, you will have a half-day trip to a local attraction which can include Dorchester, Portland, Durdle Door & Lulworth Cove and Bournemouth. There is also a full day excursion on Saturdays that can include London, Oxford and Stonehenge and Salisbury among others.

You can change your activities up to 24 hours before each activity as long as there are still places available on the activity you want to do. Our leaders will go on all of the activities and trips with you and make sure that you will have a safe and fun time.

The leaders will tell you exactly where and when you have to meet. When you go on a trip you will be given a card with the mobile numbers of the activity leaders plus the emergency



number so you will always be able to contact a member of our team if and when you need us. Here is a sample of a typical week's activity programme:

MONDAY	TUESDAY	WEDNESDAY	THURSDAY	FRIDAY	SATURDAY
14:00-16:00 Induction & Orientation of town 	14:00-16:00 Weymouth sightseeing/ Martial arts/ Escape room/ Indoor & outdoor sports	13:00-19:00 Dorchester sightseeing  OR Walking tour of Portland 	14:00-16:00 Dance lesson/ Indoor & outdoor sports/ Escape room/ SEALIFE Centre	14:00-16:00 English cream tea/ Tennis & putting/ Indoor & outdoor sports/ Casino	Day trip options: London/ Oxford/ Stonehenge & Salisbury 
19:00-21:00 Pizza and games 	19:00-21:00 Cinema/ Pirate Golf/ Indoor sports 		19:00-21:00 Pizza and games at Nothe Fort 	19:00-21:00 Friday night at WEC 	

OUR COURSES

We offer four courses at WEC:

- **English & Activities**
- **English & Sailing**
- **English & Windsurfing**
- **English & Outdoor Adventure**

All our courses include 15 hours of English tuition from 9:00-12.30 each weekday morning. English & Activities offers a full activity programme. The other three courses offer four afternoon sessions of sailing, windsurfing or outdoor adventure and on Monday afternoon, in the evenings and on Saturday, students follow the same activity and excursion programme as everyone else. For example, if your friend is not on the same course as you are, you can still meet in the English lessons and many other programmes. These four courses can be combined if you wish them to be and you can attend one for a week and another one for the other.



IN THE CLASSROOM

Placement test

You will take a placement test (oral and written) on Monday to give us a better idea of your level of English. From your second day, you will be placed in a class based on the results of the test. The results of this test are not published as they merely reflect your knowledge of English.

Materials

You will be given a notebook, pen and folder to put loose paper in. Please bring anything extra such as a pencil case with pencils, coloured pens and rubbers.

Your classes and your teachers

Your classes are organized around different, interesting topics and, every day, you will learn something new that you will also have the chance to practice in speaking. There are usually two different teachers teaching a class weekly, so you will benefit from a change of personality, accent, and teaching style. They all love their jobs and will help you develop your skills.

Fire Alarm

There will sometimes be a fire drill at school. Your teacher will show you where the nearest exit is and will tell you what to do.

Problems & Questions

We hope that you will have a happy and successful time in England, but if you have any problems, please talk to us. We can't help you if we don't know about the problem - we are always here for you, and it is important for us that you enjoy your time here.

Problem.....	See.....
.... in your homestay? the Centre Manager.
.... in your class? your teacher and/or the Director of Studies.
.... with activities? any WEC Activity Leader.
.... other students? your Teacher, Activity Leader or anyone in the office.



... with your return journey?

... an Activity Leader or someone in the office.

... in general?

... any member of staff.

WELFARE

WEC Safeguarding Team

Our Safeguarding Team is here to help you stay safe and enjoy your time in Weymouth. If you have any questions or problems, please contact any member of our staff or the Designated Safeguarding Lead.

Tel: Peter Bodri +44 (0) 7598130579; Email: peter@weymouthenglishcentre.com

Our Safeguarding Policy can be found on our website at:
<https://www.weymouthenglishcentre.com/info/documents/>

Contact Details

You can contact us in the following ways: Telephone: +44 (0) 1202 800596 Email: info@weymouthenglishcentre.com. If you need help in an emergency, you can call the emergency phone number. We will give this to you when you arrive. If you are in real danger and need emergency help from the police, ambulance or fire brigade, you can call 999 or 112. This is a free call.

Complaints Procedure

If you are not happy about something, please tell your teacher, an activity leader or any other member of staff. If they do not or cannot help you, you should talk to Peter Bodri, the Centre Manager, who will try to help you. In the unlikely event that you are still not satisfied with the result of your talk with him, you can contact English UK. Their address is: English UK, 47 Brunswick Court, Tanner Street, London, SE1 3LH. Email: info@englishuk.com Tel. +44 20 7608 7960.

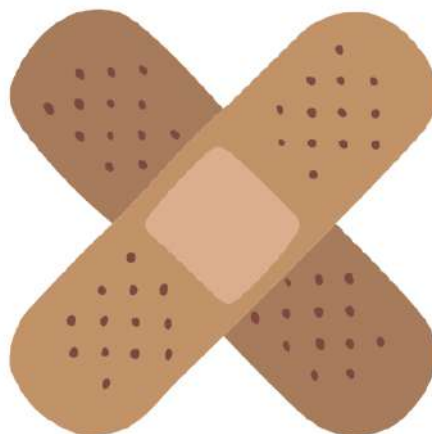


MEDICAL

Doctor

If you are ill in England, your homestay will arrange for you to see their doctor or a WEC leader will take you to a local clinic. You don't need to take proof of a health / medical insurance policy with you if you need emergency treatment. Your name and email will be taken, and you will receive an email about the details and cost of the treatment received that you can use to make your claim against your policy. It is important to notify the insurer as soon as possible. If you need any medicine, the doctor will give you a prescription which you have to take to a chemist to get your medicine. There is a small charge for this - currently £9.90 per item. Any emergency medical treatment may be covered by the UK health system if you bring your European Health Insurance Card with you, but you are strongly advised to take out travel insurance including health care for a more comprehensive cover.

If you are not from the EU, you should arrange adequate health care insurance before you come to England and bring the insurance certificate with you. For the best solution, we offer International Student Travel Insurance that contains multiple sections of cover including cancellation or curtailment, emergency medical and other related expenses, course fees protection, baggage, personal accident, and overseas legal expenses.



Medicines

If you take any medication, you should bring written details in English showing what the medication is for and when you have to take it. The medicines must also be clearly labelled in English. We cannot be responsible for medicines which are not recognised in the UK, and which are not clearly labelled in English.



ONLINE SAFETY AND CYBER-BULLYING

BE SAFE

Keep your personal information safe and secret. Think carefully before you share a photo of yourself, or your friends.

DON'T MEET UP

Never arrange to meet an online friend because it can be dangerous. No matter how well you think you might know people, they might be pretending.

DON'T OPEN FILES

If you receive junk mail (spam) or any kind of message which makes you feel uncomfortable, tell an adult that you trust and delete them. Do not reply to them!

CAN YOU TRUST THEM?

The internet is full of friendly people and amazing information. However, sometimes people might say or write things which are untrue. Always think carefully before trusting what you see or hear.

TELL SOMEONE

If you see something that makes you feel uncomfortable or worried, make sure that you tell an adult who you trust.

CYBER-BULLYING

The number of students who have access to the internet and social media is increasing at a rapid speed. The more we use these social platforms, the higher the chances of being exposed to cyber bullying. At WEC we ask you think about the following before you post anything: Is it...

True?

Helpful?

Inspirational?

Necessary?

Kind?



BEACH SAFETY

Our beaches, as beautiful as they may be, can be dangerous. It is important for your safety that you avoid beaches without lifeguards.

Hazards on the Beach

- There are many hazards on a beach, which may not be noticeable from the first glance. Please be careful of:
- High and low tides – will the beach still be there later on in the day?
- Sharp objects and little bits of glass in the sand
- Slippery rocks/ big drops from cliffs
- Unstable rocks hazards in the water
- Jellyfish/weaver fish
- Offshore winds – do not get blown out to sea
- Man-made structures in the water
- Other water users – surfers/wind surfers.
- Rip currents/ dumping waves

Rip currents are strong currents that can quickly take swimmers out of the shallows to beyond their depth. Lifeguards will show you where you can avoid them. More on beach safety:

<https://rnli.org/safety/beach-safety>

LOCAL INFO

Electricity

England has 230 volts which is the same as in Europe. However, you will always need an adapter to connect to the three-pin sockets. You can buy these at the airport or in Weymouth. See photo for UK plug.



Opening and Closing Times

Shops are normally open from Monday to Saturday from 09:00 to 17:30. Some stay open later and many now open on Sundays as well but only until 16.00. Most banks are open from Monday to Friday from 09:30 to 16:30. Some also open on Saturday mornings.



Money

Cash and cards are accepted in the UK, but you do not need cash in most places, we suggest you put money on a Revolut or Monzo card, which does not have bank charges for use abroad. Adding your card to your wallet on your phone is the safest solution. You can use contactless payments in nearly all places, and the daily contactless limit is £100.

Places of Worship

Britain is a multi-faith society. The official Church is the Church of England. Most churches are Church of England (C of E) and are therefore Christian / Protestant. There is a multi-faith chaplaincy at the college. If you would like information about places of worship, please see our notice board or come into the office (Room L205).

RULES & REGULATIONS

Smoking

It is illegal for anyone under the age of 18 to buy tobacco in England and for anyone under 16 to smoke. Our students are not permitted to smoke on any of the premises or during any of the activities or excursions. Smoking is not allowed in any public places.

Alcohol and Drugs

No-one under 18 may buy or drink alcohol. There are specific laws relating to drinking alcohol and visiting pubs in Britain. No-one under 18 years may buy or consume alcoholic drinks. Young people aged 15-17 can only go into pubs if accompanied by a responsible adult. The school rules regarding pubs reflect these legal requirements. It is illegal to possess or use drugs in the UK.

Criminal Activity

If you do anything criminal, including the possession of a knife or drugs, guns (including replicas) you will be sent home immediately at your parents' expense.

Behaviour

We ask all our students to behave in a polite, kind and caring manner to all of our students, staff and homestay hosts. If a student behaves in a disruptive or abusive manner, the school has the right to send the student home at the parents' expense. Disruptive or abusive behaviour includes harassment, bullying, actual or threatened violence, damage to personal property and verbal and other abuse based on racial, sexual or religious differences.



If you hear of, or see, any of these types of behaviour, you should inform a member of staff immediately. Please do not try to deal with the situation by yourself. All reported cases will be investigated. We also ask you to dress appropriately for class.

TIME TO GO HOME

Packing

Make sure you pack all of your clothes and personal belongings and make sure you have not left anything in the laundry. Check your wardrobes, drawers, shelves and also under your bed! Make sure you take with you:

Any written classwork you have done

Your course certificate

Any souvenirs and presents you have bought

All your clothes and personal belongings

The contact details of your new friends

Lost Property

WEC cannot return anything you leave behind; we are not responsible for your lost property.

Departure

Our leaders will take you to Heathrow and will help you check in and see you through departure if you are under 16 years old. They will give you their telephone number(s) before you go through passport control so that if you have a problem, you will be able to contact them. Make sure your suitcase is not overweight as excess baggage can cost up to £20 per kilo, depending on the airline.

***Thank you for staying with us in
Weymouth and have a safe trip home!***



Head Office: 307 Alder Road Poole
BH12 5BH United Kingdom

Summer Centre: Cranford Ave, Weymouth DT4 7LQ

Tel. +44 (0) 1202 800596

Email: info@weymouthenglishcentre.com

Website: www.weymouthenglishcentre.com



WEYMOUTH ENGLISH CENTRE

Accredited by the
 **BRITISH
COUNCIL**
for the teaching
of English in the UK

